



- [Home](#)
- [Ask A Doctor](#)
- [Medical Professional](#)
- [Author](#)
- [Volunteer](#)

- [Medical Reference](#)
- [Diseases](#)
- [Symptoms](#)
- [Labs](#)
- [Procedures](#)
- [Drugs](#)

- [Medical Specialty](#)
- [Cardiology](#)
- [Dermatology](#)
- [Endocrinology](#)
- [Fertility](#)
- [Gastroenterology](#)
- [Gynecology](#)
- [Hematology](#)
- [Infections](#)
- [Nephrology](#)
- [Neurology](#)
- [Oncology](#)
- [Orthopedics](#)
- [Pediatrics](#)
- [Pharmacy](#)
- [Primary Care](#)
- [Psychiatry](#)
- [Pulmonology](#)
- [Rheumatology](#)
- [Surgery](#)
- [Urology](#)
- [More ...](#)

Headlines:

Category: [ENT](#) | [Journal](#)

[Back to Journal Articles](#)

Pre-Rhinoplasty Computer Imaging Moderately Accurate

Last Updated: November 16, 2010.

Computer imaging prior to rhinoplasty has moderate accuracy, and the more accurate it is, the more satisfied patients tend to be with their postoperative results, with most patients finding it very useful, according to research published in the November/December issue of the *Archives of Facial Plastic Surgery*.

TUESDAY, Nov. 16 (HealthDay News) -- Computer imaging prior to rhinoplasty has moderate accuracy, and the more accurate it is, the more satisfied patients tend to be with their postoperative results, with most patients finding it very useful, according to research published in the November/December issue of the *Archives of Facial Plastic Surgery*.

Umang Mehta, M.D., of the Atherton Plastic Surgery Center in California, and colleagues analyzed graded assessments by surgeons and non-surgeons of photographs and morphed preoperative computer imaging (PCI) images of 38 rhinoplasty patients six months post-procedure and surveyed the patients on their level of satisfaction to determine how accurate PCI is in reflecting postoperative results.

The expert panel determined mean overall accuracy to be 2.98 on a five-point scale, with supratip height being the lowest-rated of the 12 parameters considered, and measurements of the upper third being the highest rated. Patient satisfaction correlated highly with PCI accuracy, and the majority of the patients found the PCI extremely useful.

"PCI is a useful exercise, valued by patients during the rhinoplasty consultation. Accuracy is moderate in both primary and revision cases, although supratip edema is a limiting factor at the six-month mark," the authors write.

- [Abstract](#)
- [Full Text \(subscription or payment may be required\)](#)
- [Editorial \(subscription or payment may be required\)](#)
- [Commentary \(subscription or payment may be required\)](#)

Copyright © 2010 [HealthDay](#). All rights reserved.

Previous: [Poor Handwriting in Autism Persists Into Adolescence](#) Next: [AHA: Single Epoetin Alfa Infusion May Not Help in STEMI](#)

Reader comments on this article are listed below. [Review our comments policy.](#)

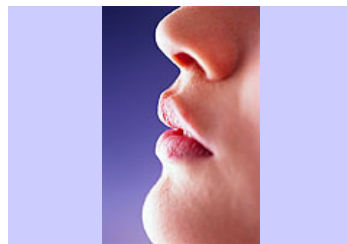
Submit your opinion:

Name:

Email:

Location:

URL:



Patients find it useful, with higher accuracy correlated with higher satisfaction

[+](#) Share | [f](#) [e](#) [g+](#) [t](#)

Comments: (0)

[Tell-a-Friend](#)

Related

advertisement

Ads by Google

[Weight Loss Surgery](#)
Gastric Bypass & Banding Center of Excellence - Weight Loss Now www.shh.org

[Gastric Sleeve \(VSG\)](#)
Leading surgeon, All-Inclusive for \$8,999. We offer Financing! www.EndoBariatric.com

[Kevitch & Chung](#)
Board Certified Plastic Surgeons specializing in SmartLipo www.asasurgery.com

[Body Sculpting](#)
UltraSculpt is a Breakthru in Lipo. Learn More & Find a Surgeon Today! www.LoveYourLook.com

Useful Sites
[MediLexicon](#)

Remember my personal information

Notify me of follow-up comments?

advertisement

Treating Uterine Fibroids

Cutting edge w/out the Cutting. Non Invasive Uterine Fibroid Treatment
Uterine-Fibroids.org/Fibroids

Ask a Doctor Online Now

18 Doctors Online Now Answer Your Questions In Minutes.
Health.eAnswer.com

Laser Spine Surgery

Safe Laser Procedure. Relief From Spine Pain In Less Than 1 Week
www.LaserSpineInstitute.com/



Ads by Google

Are you a Doctor, Pharmacist, PA or a Nurse?

Join the Doctors Lounge online medical community

- **Editorial activities:** Publish, peer review, edit online articles.
- **Ask a Doctor Teams:** Respond to patient questions and discuss challenging presentations with other members.

[Doctors Lounge Membership Application](#)

Tools & Services: [Follow us on Twitter](#) | [RSS News](#) | [Newsletter](#) | [Contact us](#)

Copyright © 2001-2010
Doctors Lounge.
All rights reserved.

Medical Reference:
Diseases | Symptoms
Drugs | Labs | Procedures
Software | Tutorials

Advertising
Links | Humor
Forum Archive
CME | Conferences

Privacy Statement
Terms & Conditions
Editorial Board
About us | Email

We subscribe to
the HONcode
principles.
[Verify here](#)

